



URBAN SUSTAINABILITY TRANSITIONS: THE ROLE OF UNIVERSITIES AND LIVING LABS

OKSANA MONT

2020 | LUND UNIVERSITY





OUTLINE

SWEDISH UNIVERSITIES' MISSION

URBAN LIVING LABS APPROACH

EXAMPLES OF URBAN LIVING LABS

ROLE OF UNIVERSITY IN URBAN LIVING LABS

SKILLS AND EXPERTISE FOR URBAN SUSTAINABILITY TRANSITIONS



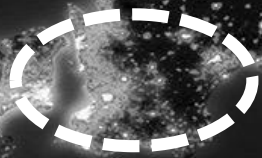
Greater Copenhagen

Norway

Finland

Denmark

Sweden



A hub for ideas, science and culture



17 higher education institutions
17 research parks and incubators
14 000 researchers
150 000 students

A person wearing a white lab coat and gloves is holding a petri dish containing a blue agar medium with white bacterial colonies. The person's face is blurred in the background. The text 'LUND UNIVERSITY' is overlaid in large white letters.

LUND UNIVERSITY

EDUCATION, RESEARCH AND COLLABORATION SINCE 1666

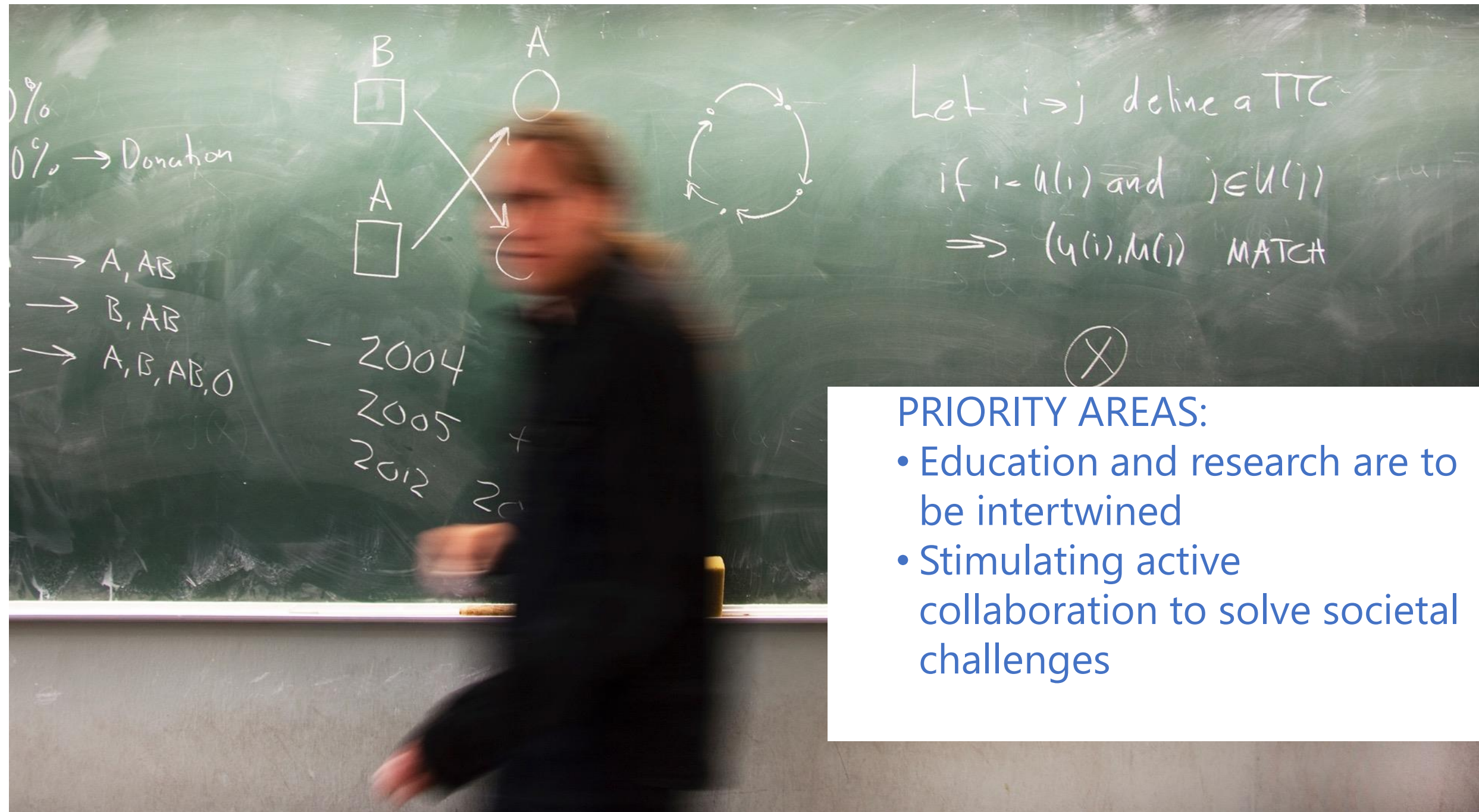


8 000 employees
40 000 students
3 campuses





VISION: A world-class university that works to understand, explain and improve our world and the human condition.



PRIORITY AREAS:

- Education and research are to be intertwined
- Stimulating active collaboration to solve societal challenges

1 NO POVERTY



2 ZERO HUNGER



3 GOOD HEALTH AND WELL-BEING



4 QUALITY EDUCATION



5 GENDER EQUALITY



6 CLEAN WATER AND SANITATION



7 AFFORDABLE AND CLEAN ENERGY



8 DECENT WORK AND ECONOMIC GROWTH



9 INDUSTRY, INNOVATION AND INFRASTRUCTURE



10 REDUCED INEQUALITIES



11

12 RESPONSIBLE CONSUMPTION AND PRODUCTION



13 CLIMATE ACTION



14 LIFE BELOW WATER



15 LIFE ON LAND



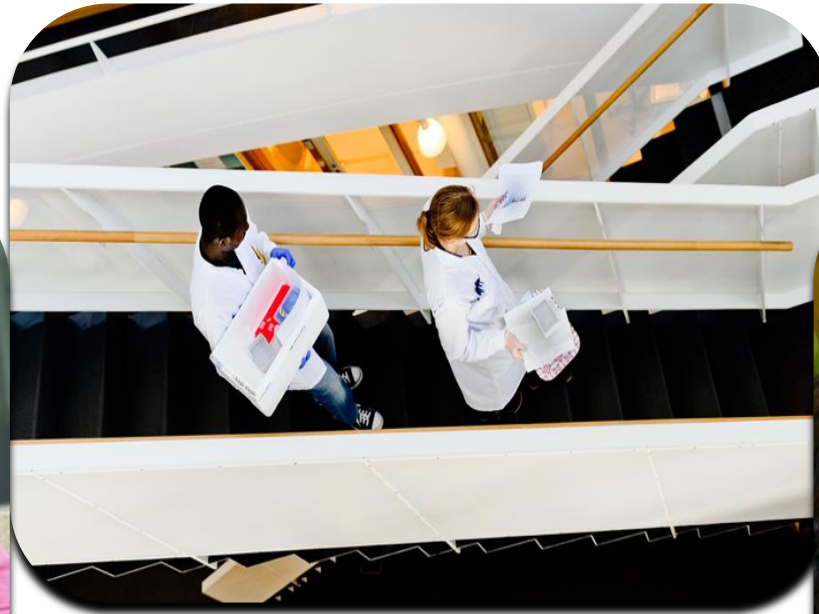
16 PEACE, JUSTICE AND STRONG INSTITUTIONS

17



UNIVERSITY MISSION

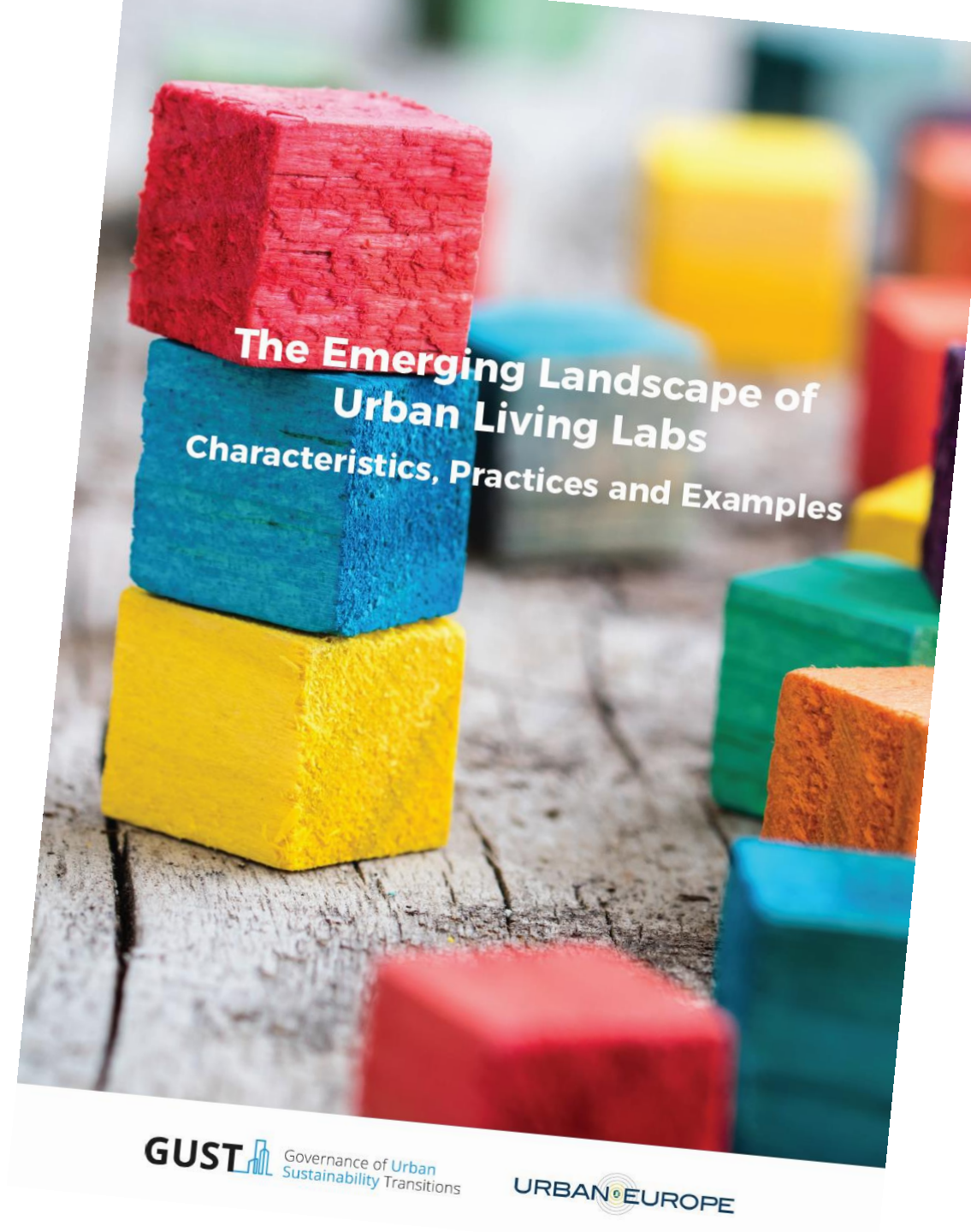
RESEARCH



EDUCATION

PUBLIC OUTREACH

URBAN LIVING LABS





Urban living labs are geographically or institutionally bounded spaces
“devised to design, test and learn from social and technical innovation in real world settings” and in real time.

adopted from Voytenko et al 2016



Urban living labs are also an approach for intentional co-creation and collaborative experimentation of researchers, citizens, companies and local governments.

GUST 



GOVERNMENT



BUSINESS



CIVIL SOCIETY



ACADEMIA

CRITICAL ADVANTAGES

ULLs connect partners from various sectors with complementary competences, skills, resources and agency.

CHARACTERISTICS



Geographical
embeddedness



Experimentatio
n & learning



Participation
& user
involvement



Leadership
&
ownership



Evaluation
of actions
and impact

TYPES OF URBAN LIVING LABS



STRATEGIC



CIVIC



GRASSROOTS



EXAMPLES OF URBAN LIVING LABS



SHARING CITIES SWEDEN

[Home](#) [Collaborating](#) [Experimenting](#) [Investigating](#) [Learning](#) [News](#)



**Sharing
Cities
Sweden**

**A NATIONAL PROGRAM FOR THE
SHARING ECONOMY IN CITIES**



Collaborating



Experimenting



Investigating



Learning



iiiee
THE INTERNATIONAL INSTITUTE FOR
INDUSTRIAL ENVIRONMENTAL ECONOMICS

Learning across test-beds in Sharing Cities Sweden

On **12 November 2020**, the test-beds in Göteborg, Umeå and Malmö organised an **online event** to share lessons, insights and plans on the sharing economy in cities. Learning across the test-beds is a fundamental aspect in the design and development of Sharing Cities Sweden as a national program for the sharing economy in cities in Sweden.



Emerging Insights and Stories from Strategic Projects

Sharing Cities Sweden is developing strategic projects to investigate the sharing economy in cities in Sweden and support the activities of the test-beds and national node. In October 2020, Sharing Cities Sweden published a collection of articles on the emerging insights and stories from the strategic projects - **digital platforms, business models, small towns, behavioural economics** and **social drivers**.



BRUNNSHÖG

- High-tech
- Social innovation
- User engagement
- Ambitious goals
- Evaluation

Brunnshög: a Collaborative Community

Katy Burgio, kgb8ff@virginia.edu
Nicole Geist, ncg9rh@virginia.edu
Laura Kerr, lik9jb@virginia.edu

In collaboration with Eva Dalman and Jens Hansson at the Municipality of Lund, Sweden
May 28th, 2014

Advised by: Yuliya Voytenko, IIIEE at Lund University, yuliya.voytenko@iiiee.lu.se
Reid Bailey, University of Virginia, rrbailey@virginia.edu
Greg Lewin, University of Virginia, gcl8a@virginia.edu



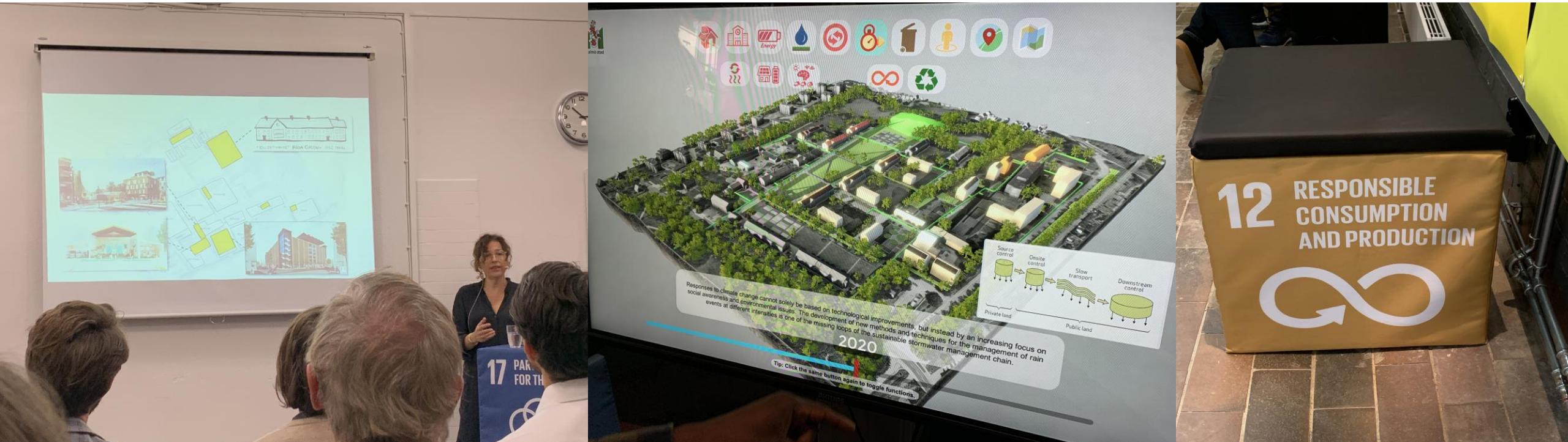
Image Above:
Botsman, R., Rogers, R. (2010) *What's Mine is Yours – How Collaborative Consumption is Changing the Way We Live*. USA: HarperCollinsPublishers.

Foto: Perry Nordeng

<https://www.lund.se/brunnshog/om/projekt/>

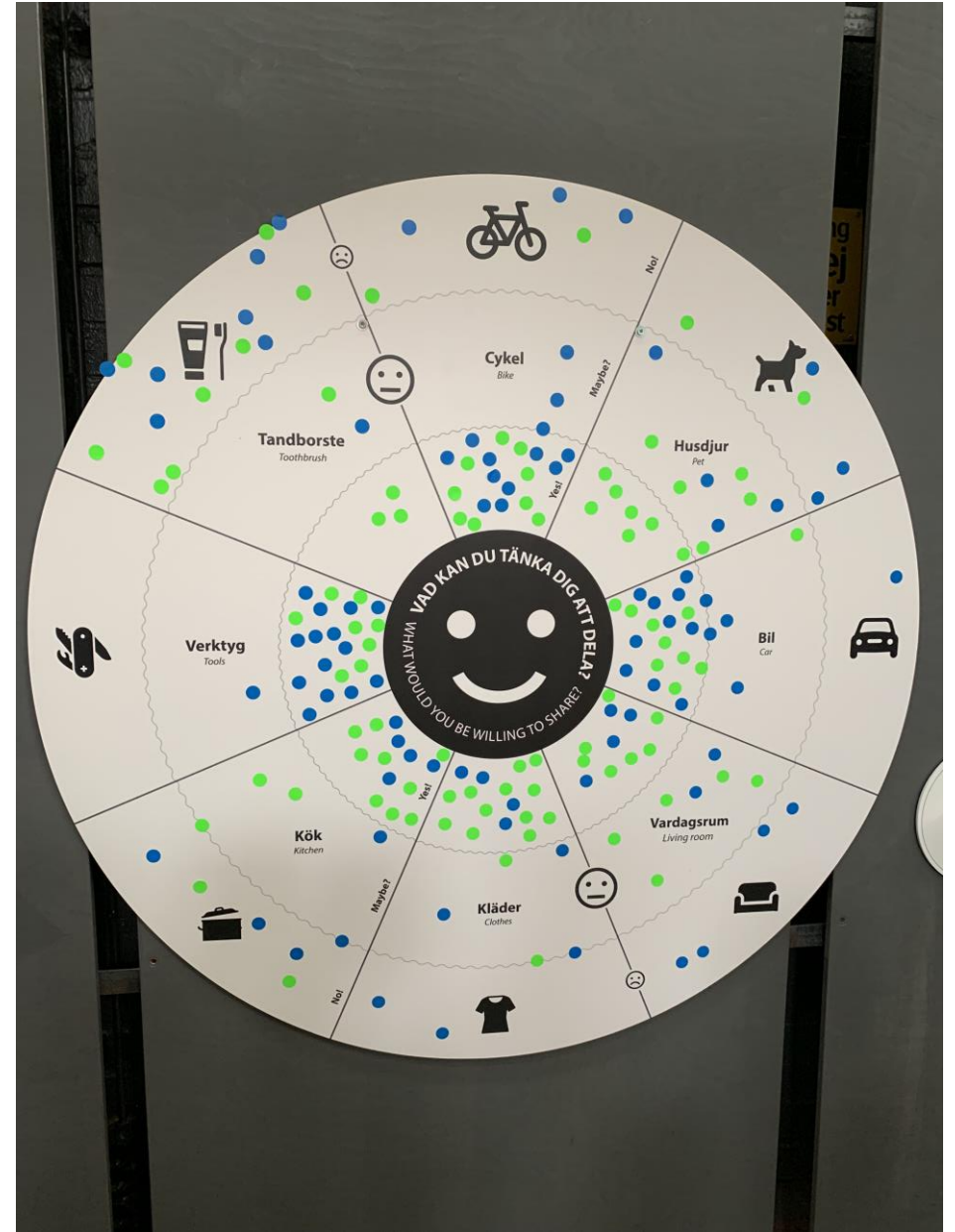
SEGE park

COLLABORATION ACROSS ACTORS



SEGE park

ENGAGEMENT WITH ACADEMIA



STPLN open maker space



Experimentation
Co-creation
Evaluation

"Stapeln has developed organically as a bottom up initiative. One could try out different options in this development, it was a self-movement with informal learning."



UNIVERSITY ROLES IN URBAN LIVING LABS

Development



Participation



Evaluation



Employment





CRITICAL ADVANTAGES FOR ACADEMIA

Identifying problems and challenges together with societal actors to secure relevance and topicality of education and research



CRITICAL ADVANTAGES FOR ACADEMIA

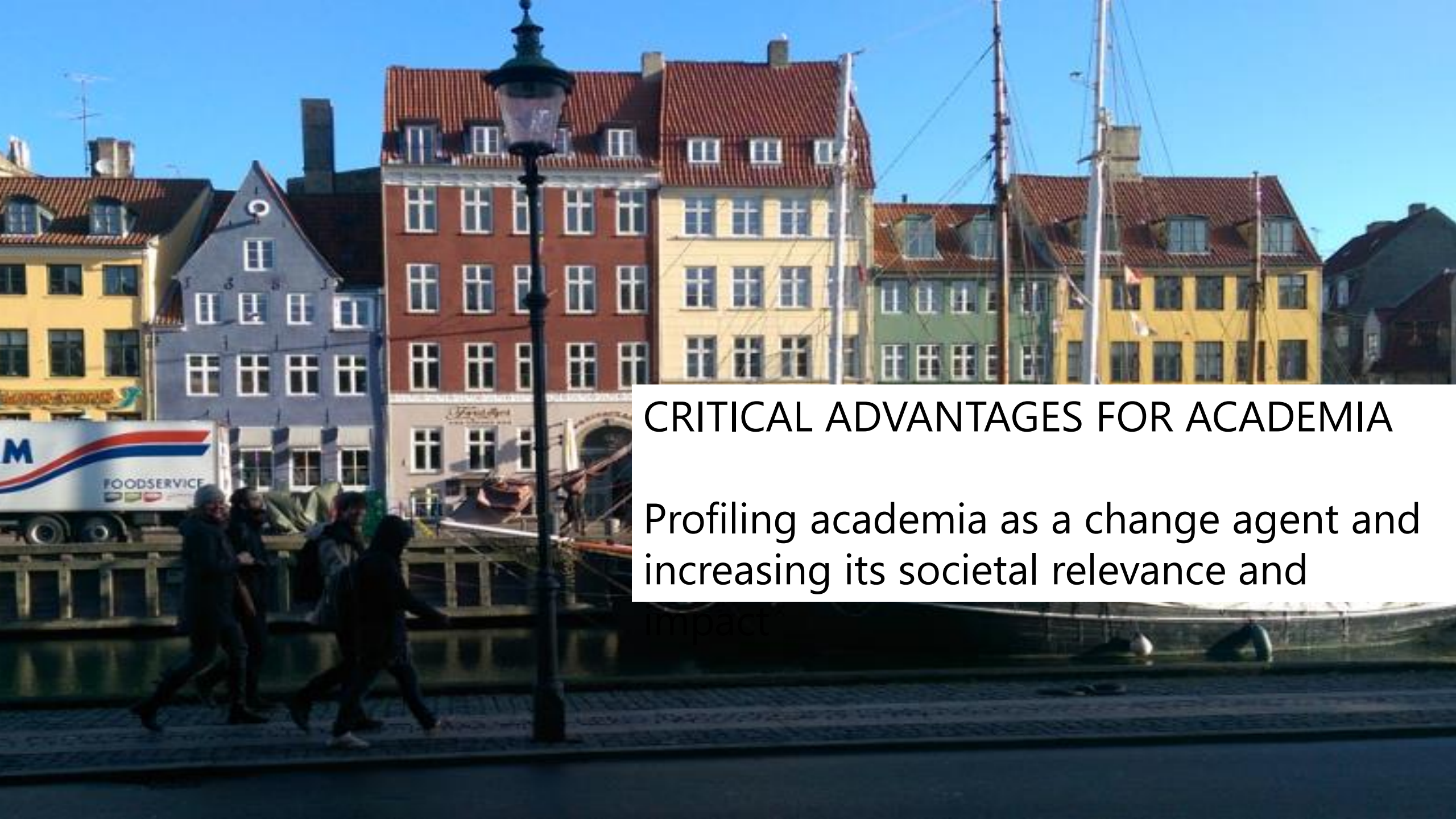
Developing solutions and testing them with societal actors, in real situations and contexts



CRITICAL ADVANTAGES FOR ACADEMIA

Learning from partners in living labs:
knowledge, skills, diversity of views and
interests, complexity of real life contexts





CRITICAL ADVANTAGES FOR ACADEMIA

Profiling academia as a change agent and increasing its societal relevance and impact



CRITICAL ADVANTAGES FOR ACADEMIA

New networks, collaborations and shared practices are created



SKILLS AND EXPERTISE FOR URBAN SUSTAINABILITY TRANSITIONS

VISION OF THE INTERNATIONAL INSTITUTE FOR INDUSTRIAL ENVIRONMENTAL ECONOMICS (IIIEE)



We produce and share **actionable knowledge** for sound decision making at all levels, from the local to the global, and we **educate future leaders and change agents** to enable transitions to climate neutral and resource-efficient economies.

4 RESEARCH THEMES

BUSINESS MANAGEMENT AND PRACTICE



POLICY INTERVENTIONS



CONSUMPTION GOVERNANCE




URBAN TRANSFORMATION

EDUCATION

The 4 research themes are
translated into MSc courses
Practice oriented
Mission driven



ALL COURSES ENGAGE WITH STAKEHOLDERS

- 
- Presentations and lectures by stakeholders
 - Study visits & evaluations of companies, regions, municipalities
 - Audience for course work presentations, feedback
 - "Topics fair" for MSc theses
 - Discussants during MSc defences

SUSTAINABILITY SOLUTIONS IN CONTEXT

A background image showing a group of students in a meeting or workshop. They are gathered around a table, looking at documents and talking. In the background, several national flags are visible, suggesting an international or multicultural setting. The students are dressed in casual attire, and the atmosphere appears collaborative and focused.

- Student teams conduct client projects all over the world.
- Assist organisations and governmental institutions in finding solutions to their individual sustainability challenges
- The students:
 - Apply sustainability concepts, tools and strategies in a real-world context;
 - Systematically analyse and intervene in a real-life complex systems;
 - Develop professional conduct and skills when working with practitioners.
 - Learn to communicate orally and in writing with non-academic audiences.

OUTREACH

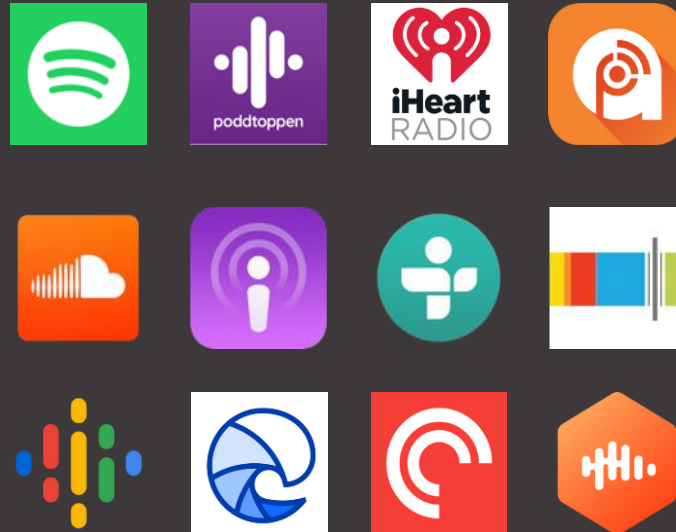
ADVANCING SUSTAINABLE SOLUTIONS

IIIEE PODCAST



Mission

To make sustainability more accessible and engaging by connecting the podcast to research, events and people relevant to the activities of the IIIEE.



www.iiiee.lu.se/podcast



LUND
UNIVERSITY

iiiee
THE INTERNATIONAL INSTITUTE FOR
INDUSTRIAL ENVIRONMENTAL ECONOMICS

MASSIVE OPEN ONLINE COURSES

Sustainable Cities

PART OF THE GREENING THE ECONOMY SERIES

Urban Nature: Connecting Cities, Nature and Innovations

PART OF THE GREENING THE ECONOMY SERIES

How can nature help us

Lessons from Scandinavia

PART OF THE GREENING THE ECONOMY SERIES

Circular Economy: Sustainable Materials Management

PART OF THE GREENING THE ECONOMY SERIES

How can we achieve a circular economy through sustainable materials management?

Sharing Cities: Governance and Urban Sustainability

PART OF THE GREENING THE ECONOMY SERIES

SOCIETAL IMPACT





LUND
UNIVERSITY

THANK YOU FOR YOUR ATTENTION

OKSANA MONT



LUND
UNIVERSITY

THE INTERNATIONAL INSTITUTE FOR
INDUSTRIAL ENVIRONMENTAL ECONOMICS